



Sound Insulation Prediction Software

Instructions to Install INSUL from Insul web site

Go to <http://www.insul.co.nz/download.html> and download the file marked Download version 6.4 (xxxxx version). Where xxxxx represents the country version you wish to install.

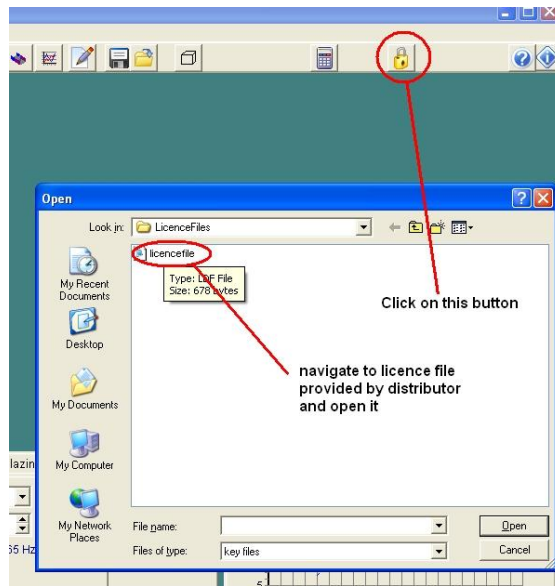
Before installing INSUL you should close any open applications and log on as a user with sufficient access rights to install programs. This normally means having Administrator rights.

Note: For full operation the software requires a hardware key plugged into a USB port on the computer, however without a hardware key it will run in "demo mode" or with a temporary software key it will run in "trial mode".

Install INSUL

1. If you have purchased INSUL you will have received a usb key. Plug this into a spare usb port on your computer. In most systems that are connected to the Internet Windows will automatically locate and install the correct drivers for the Safenet key. This will take perhaps 30 seconds to a minute, after which you will get a message that the drivers are installed and then the small LED in the tip of the key will light up.
2. If this does not happen then download the file Sentinel_HASP_SRM_Runtime_setup.zip from the INSUL website. Unzip the file and run the file HASPUserSetup.exe. This will install the drivers for the usb key. Now plug the usb key into a spare usb port. The small LED in the tip of the key will light up.
3. Unzip the files from the Insul64xxxx.zip file you have downloaded and copy the file Setup.exe to a temporary folder.
4. You should now install INSUL by double clicking on the file "Setup.exe".

5. Read the instructions on the Welcome page and click the next button.
6. Read the Software license Agreement and if you accept the terms of the licence, click the Yes button.
7. If you wish to read the INSUL release notes you may scroll down the Readme Information then click the Next button.
8. Type your name and the company name in the appropriate fields and click the Next button.
9. To choose a particular destination directory for INSUL's files click the Browse button. To accept the default destination directory click the Next button.
10. To change the Program folder where program icons will be stored enter a new folder name in the Program Folder field, otherwise leave the default folder name. Click the Next button.
11. If you are satisfied with the settings click Next to begin copying the necessary files.
12. You can now run the program from the normal Windows "Start ", "All Programs" menu.
13. **Demo Mode:** If INSUL does not detect a USB hardlock connected to the computer then it will run in "demo" mode. Materials and wall and ceiling types are selected at random. This mode allows you to see how Insul works but does not allow useful calculations.
14. **Trial Mode:** A software licence file can be obtained from your INSUL distributor to allow a temporary trial of INSUL. This licence file will have the extension ldf (e.g. licencefile.ldr). Start INSUL and click on the button that has a picture of a lock. Browse to where you have stored the licence file and open the licence file.



13. Once the trial period has expired you will not be able to run INSUL unless you have purchased INSUL and have been sent a USB key.