



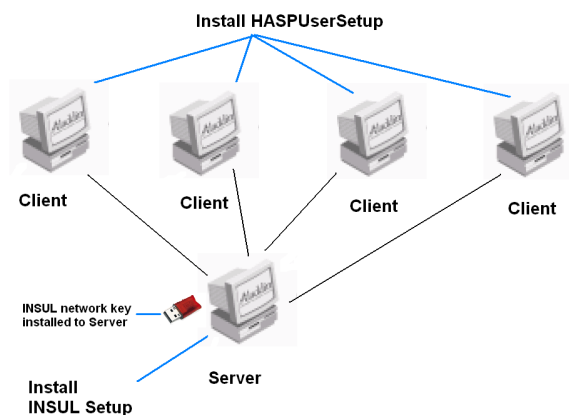
Sound Insulation Prediction Software

Installation Instructions for Network INSUL (version 6.4)

Introduction

INSUL can be run over a Local Area Network (LAN). It is not necessary to install INSUL on every client computer as it can be run from one network location. INSUL should be installed on one computer on the network, usually this would be the network file server. The network Hasp key should be plugged into the computer which has INSUL installed on it. Each user will need access rights to the folder where INSUL has been installed.

On each other client computer on the network you must install the Hasp drivers using the HASPUserSetup.exe file on the CD. This file can also be downloaded from the INSUL website (www.insul.co.nz) Once these Hasp drivers have been installed the client computer will be able to communicate with the network key to determine if any licenses are available



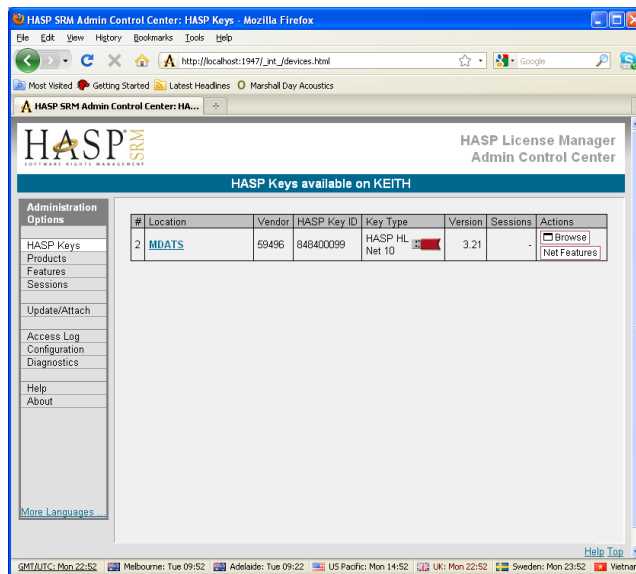
Install INSUL Setup

FILE SERVER

1. Insert the INSUL CD into the CD-ROM drive. Start the INSUL installation program by running the program setup.exe in the folder INSUL.
2. Read the instructions on the Welcome page and click the next button.
3. Read the Software license Agreement and if you accept the terms of the licence, click the Yes button.
4. If you wish to read the INSUL release notes you may scroll down the Readme Information then click the Next button.
5. Type your name and the company name in the appropriate fields and click the Next button.
6. To choose a particular destination directory for INSUL's files click the Browse button. To accept the default destination directory click the Next button. Note that this folder must be accessible by all users on the network.
7. To change the Program folder where program icons will be stored enter a new folder name in the Program Folder field, otherwise leave the default folder name. Click the Next button.
8. Once the installation process has finished you can start INSUL on that computer (this is the computer labelled Server in the diagram above).
9. INSUL should start and display the About screen. This should have the version no. of INSUL, the version no. of the key and the serial no.

Client Computers

10. On each other networked computer that you want to run INSUL from you will need to install the Hasp key drivers. Run the file HASPUsersetup.exe on each computer (These are the computers labelled Client in the diagram above).
11. You should now be able to run INSUL from each computer by running the application file Insul64.exe from the network folder where you have installed it.
12. The operation of the key software can be monitored by starting an internet browser such as Internet Explorer or Firefox and typing into the address bar localhost:1947. This shows the Hasp keys connected to the system and allows one to change and monitor various settings.



WAN setup

The network Hasp Key allows INSUL to be run over a Wide Area Network (WAN) so that a single network key can be shared amongst several remote offices. The Hasp key must be connected to a computer on the network that is able to be accessed by all the remote offices. The following configuration of the Hasp License Manager on each machine in each remote office is required.

1. Type **localhost:1947** in the address bar of Windows Explorer or Mozilla. This starts the Hasp License Manager.
2. Click the **Configuration** tab on the left hand side menu.
3. Choose the **Access to Remote License Managers** tab across the top of the window.
4. Click the box next to **Allow Access to Remote Licences** and **Broadcast Search for Remote Licences**.
5. In the clear window next to **Specify Search Parameters** type in the IP address of the server that holds the Hasp key and press the **Submit** button, e.g. 10.99.99.110
6. Click the **HASP Key** button on the left hand side menu and wait for the remote Hasp key to appear in the list of keys.
7. It may take some time but the remote Hasp key should be found within 60sec.
8. Once the Hasp key appears in the list, you should be able to run INSUL.
9. You only have to do this setup once as the settings are stored when the browser is closed.